

# RF-12.85.....Reference series



## FEATURES

- » 2-way vented loudspeaker system
- » 12" cone speaker
- » 1" compression driver with constant directivity horn
- » 400 W power handling

## SPECIFICATIONS

<b>RMS (Average) Power Handling<sup>R</sup>:</b>	400 W
<b>Program Power Handling<sup>P</sup>:</b>	800 W
<b>Peak Power Handling<sup>K</sup>:</b>	1600 W
<b>On-axis Frequency Range:</b>	54 Hz - 20 kHz
<b>Nominal Impedance:</b>	8 Ω
<b>Minimum Impedance:</b>	8 Ω (at 55 Hz)
<b>On-axis Sensitivity 1W / 1 m:</b>	98 dB SPL
<b>Rated Peak SPL at Full Power:</b>	130 dB
<b>Nominal -6 dB Beamwidths:</b>	80° Horizontal x 50° Vertical
<b>Enclosure Material:</b>	Wisa® Birch Plywood
<b>Finish:</b>	Black Paint
<b>Transducers/Replacement Parts:</b>	LF: 12 P/GM 12P HF: M-30/GM M-50
<b>Connector:</b>	2 paralleled NL4 Speakon, wired to ±1
<b>Dimensions (H x W x D):</b>	64.4 x 37 x 34.6 cm 25.4 x 14.6 x 13.6 in
<b>Weight:</b>	22 kg (48.4 lb)
<b>Accessories (optional):</b>	ANL-2; AXU-RF12; AX-Truss; AXA-2RF12; AXA-3RF12; TRD-2; TRD-4

## INTRODUCTION

The D.A.S. RF-12.85 is a 2-way vented loudspeaker system designed for applications covering speech reinforcement, program reproduction and live music productions.

## DESCRIPTION

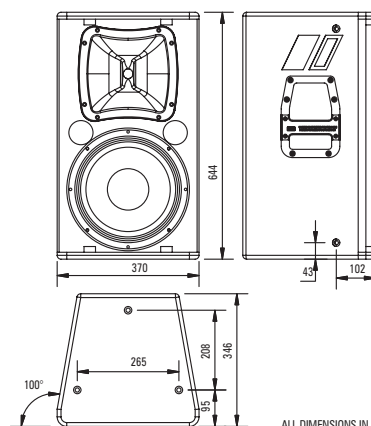
The low end utilizes a high efficiency 12" low frequency speaker with 3" voice coil.

The high end makes use of a 1" exit compression driver with 2" titanium diaphragm, coupled to a rotatable 80° x 50° horn.

The enclosure is manufactured from Wisa® Birch plywood and is finished with a durable black paint. The trapezoidal enclosure has 10 degree side angles for easier arraying.

The unit has a robust grille design internally lined with acoustically transparent filter cloth to protect the loudspeaker components. The covering is resistant to wear and tear, provides protection from dust and dirt.

12 integrated rigging points that accept 10M forged steel eyebolts make suspension in either the horizontal or vertical positions safe and simple. The D.A.S. RF-12.85 is stand and pole mountable, and 2 or 3 units can be arrayed using AXA accessories.



ALL DIMENSIONS IN MILLIMETERS

<sup>R</sup> Based on a 2 hour test using a 6 dB crest factor pink noise signal bandlimited according to IEC 268-1 (1985). All power ratings are referred to the nominal impedance.

<sup>P</sup> Conventionally 3 dB higher than the RMS measure, although this already utilizes a program signal.

<sup>K</sup> Corresponds to the signal crests for the test described in<sup>R</sup>.

## RF-12.85

### FREQUENCY RESPONSE

Figure 1 shows the frequency response at 1 m of a unit radiating to a half space anechoic environment and driven by a 1 W (2.83 V) swept sine signal, and impedance curve.

### DISTORTION

Figure 2 shows the Second Harmonic Distortion (grey) and Third Harmonic Distortion (dotted) curves for a unit driven at 10% of its nominal power handling rating.

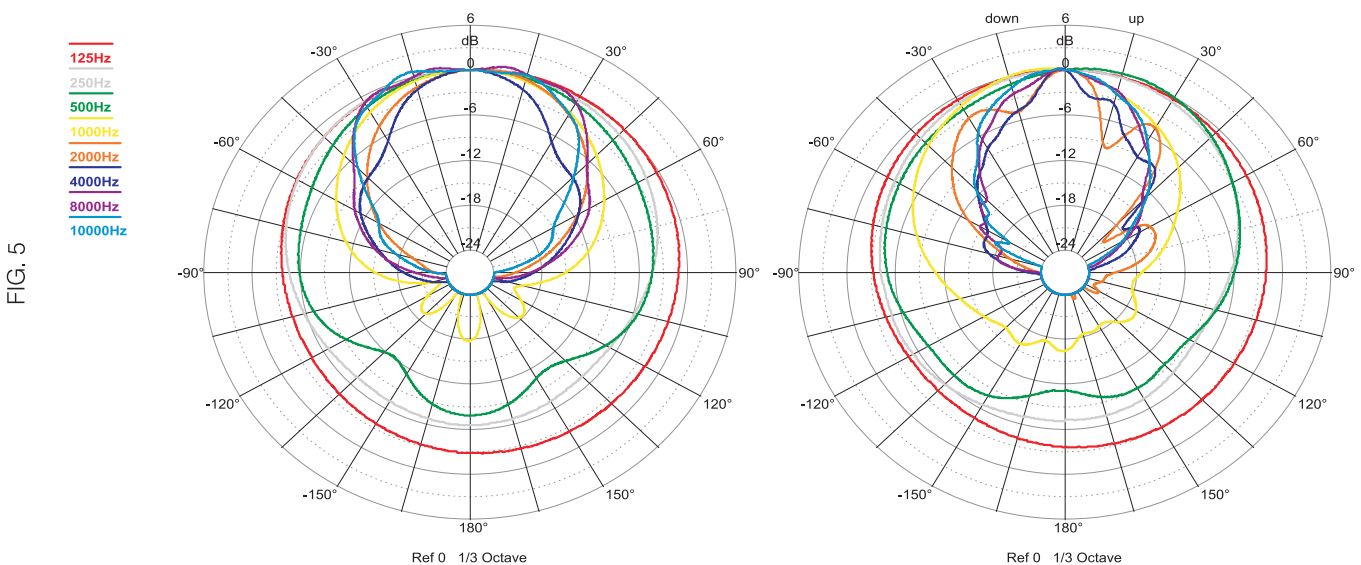
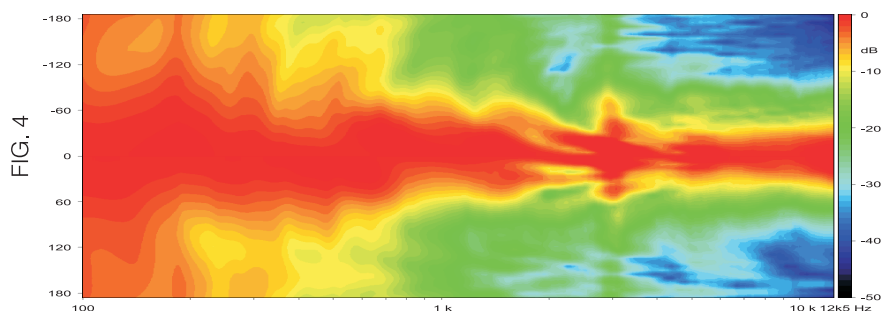
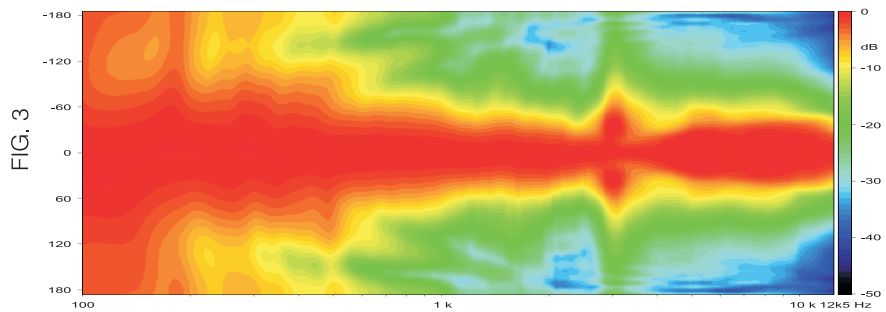
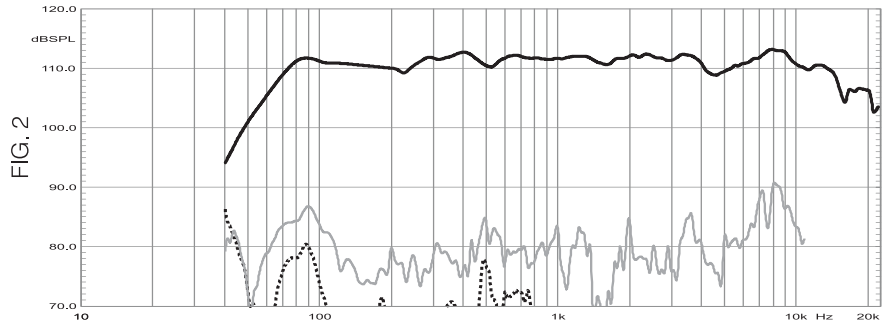
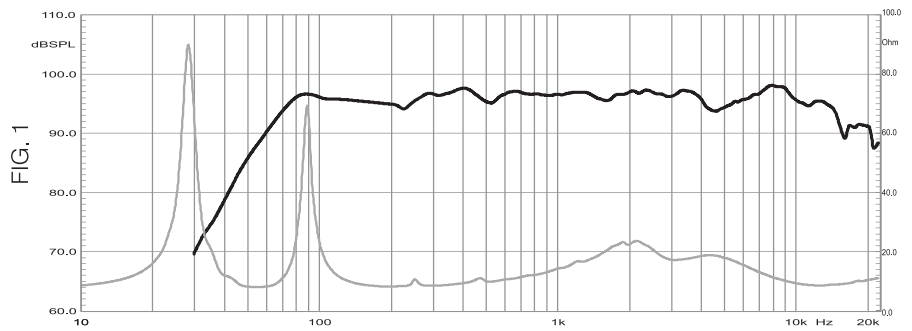
### DIRECTIVITY

Figure 3 shows normalized horizontal isobar plot.

Figure 4 shows normalized vertical isobar plot.

### POLAR RESPONSE

Figure 5 shows the 1/3 octave band horizontal (left) and vertical (right) polars for the indicated frequencies. Full scale is 30 dB, 6 dB per division.



**D.A.S. AUDIO, S.A.**  
C/ Islas Baleares, 24 - 46988 Fuente del Jarro - Valencia, SPAIN Tel. 96 134 0525 - Tel. Intl. +34 96 134 0860 Fax. 96 134 0607 - Fax. Intl. +34 96 134 0607  
**D.A.S. AUDIO of AMERICA, Inc.**  
Sunset Palmetto Park- 6816 NW 77th Court - Miami, FL 33166 U.S.A. TOLL FREE : 1-888DAS4USA Tel. 305 436 0521 - Fax. 305 436 0528  
**D.A.S. AUDIO ASIA PTE. Ltd.**  
25 Kaki Bukit Crescent #01-00/02-00 Kaki Bukit Techpark 1, Singapore 416256 - Tel. +65 6742 0151 - Fax: +65 6742 0157  
**D.A.S. AUDIO DEUTSCHLAND GmbH,**  
Frankfurter Str. 17, 64546 Mörfelden-Walldorf, Germany - Tel: +49 (0)6105 967610 Fax: +49 (0)6105 967611  
<http://www.dasaudio.com>