

# MSR Gold™ SA Double Ended



MSR Gold™ 575 SA/2 DE 1CT/40

To optimize the total lifetime of the double ended MSR Gold™ SA Double Ended lamps, the caps are plated with gold. This provides superior heat protection and thereby minimizes premature failure of the lamp and lamp holder, as well as ensuring extended consistent performance. In addition, the highly innovative P3 technology, developed by Philips, allows the lamp to be used at higher temperatures, which further extends service life and consistency of high-quality light output.

## Product data

### • General Information

Cap-Base	SFC-11 [ SFC-11]
Operating Position	UNIVERSAL [ Any or Universal (U)]
Main Application	Entertainment
Life To 50% Failures (Nom)	750 h
System Description	SA/2 DE

### • Light Technical

Color Code	2
Luminous Flux (Min)	39000 lm
Luminous Flux (Nom)	42000 lm
Chromaticity Coordinate X (Nom)	294
Chromaticity Coordinate Y (Nom)	317
Correlated Color Temperature (Nom)	7500 K
Luminous Efficacy (rated) (Nom)	73 lm/W
Color Rendering Index (Nom)	75

### • Operating and Electrical

Power (Rated) (Nom)	575 W
---------------------	-------

Lamp Current (Nom)	7 A
Ignition Supply Voltage (Min)	198 V

### • Controls and Dimming

Dimmable	No
----------	----

### • Mechanical and Housing

Cap-Base Information	SFC-11
----------------------	--------

### • Luminaire Design Requirements

Pinch Temperature (Max)	400 °C
-------------------------	--------

### • Product Data

Full product code	872790091464100
Order product name	MSR Gold™ 575 SA/2 DE 1CT/40
EAN/UPC - Product	8727900914641
Order code	928175105114
Numerator - Quantity Per Pack	1
Numerator - Packs per outer box	40
Material Nr. (12NC)	928175105114
Net Weight (Piece)	0.032 kg

**PHILIPS**

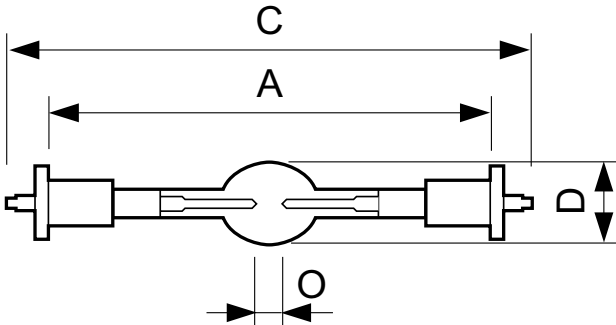
# MSR Gold™ SA Double Ended

## Warnings and Safety

- A lamp breaking is extremely unlikely to have any impact on your health. If a lamp breaks, ventilate the room for 30 minutes and

remove the parts, preferably with gloves. Put them in a sealed plastic bag and take it to your local waste facilities for recycling. Do not use a vacuum cleaner.

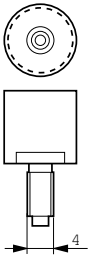
## Dimensional drawing



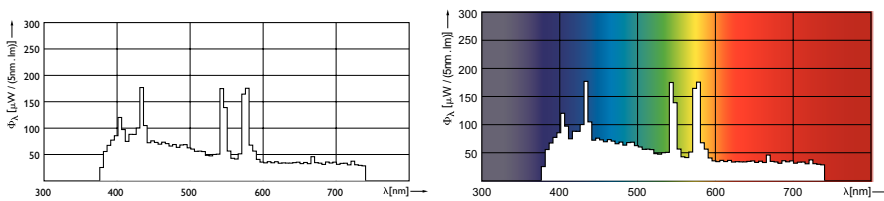
MSR Gold™ SA/DE

## MSR GOLD 575 SA/2 DE

Product	D	O	A	A	A	C
MSR Gold™ 575 SA/2 DE 1CT/40	18.5 mm	5.0 mm	69.6 mm	70.4 mm	70 mm	92 mm



## Photometric data



© 2015 Philips Lighting Holding B.V.  
All rights reserved.

Specifications are subject to change without notice. Trademarks are the property of Koninklijke Philips N.V. (Royal Philips) or their respective owners.

[www.philips.com/lighting](http://www.philips.com/lighting)

2015, December 23  
data subject to change