



## DESCRIPTION

Ever since K-array launched its first slim column speaker in 2007, it has maintained its position of leader of sleek line arrays. With every subsequent product release, the company has perfected its line arrays composed of closely-spaced, full-range sound sources by incorporating its Pure Array Technology.

This same line array technology is now being applied to the latest addition to the K-array portfolio in a form other than a speaker. The Capture-KMC20 is the smallest line array microphone in the market featuring PAT technology composed of 8 x 4mm cardioid capsules aligned in a line array configuration.

The incredibly thin microphone has all the advantages of a K-array line array: PAT line array microphones show a minimal variation of gain with distance. As a result, the distance between the sound source and the microphone is not crucial and can move towards or away from the mic freely without strongly affecting the volume or audio quality.

The Capture-KMC20 includes a preamplifier and is ready to be mounted on an XLR flange mount. Elegant brass bases are available for purchase

for both horizontal and vertical orientations depending on the installation needs.

The polar response is cardioid in the horizontal plane and very narrow in the vertical plan, therefore, when mounted in vertical, not only does the mic avoids picking up sound from behind, but it's also insensitive to sounds that come from above and below, strongly reducing the amount of ambient sound captured.

Being very wide in the horizontal plane, a single microphone can pick up more people and gives maximum freedom of movement to the right and left without volume fluctuations. While when mounted in horizontal, the capture is very wide on the vertical plane and very narrow on the horizontal plane, resulting in capturing only the sound source in front of the microphone regardless of height like a speaker standing or sitting.

And given its thickness of 6mm, these incredibly thin microphones are impressively discreet and made with durable premium materials like brass to be used for a variety of applications in conference halls, boardrooms, houses of worship and TV studios.

### AVAILABLE ACCESSORIES

VERTICAL BASE	MICROPHONE STAND
HORIZONTAL BASE	POP FILTER
WINDSCREEN	

### FEATURES

- Line array characteristics
- PAT technology
- Wide horizontal cardioid polar pattern
- Narrow vertical polar pattern
- Ultra-black Ruthenium-plated brass
- Horizontal and vertical setup
- Mounting accessories
- Discreet, invisible

### SUGGESTED APPLICATIONS

CONFERENCES
BOARDROOMS
HOUSES OF WORSHIP
BROADCAST & STUDIOS
EDUCATION & GOVERNMENT FACILITIES

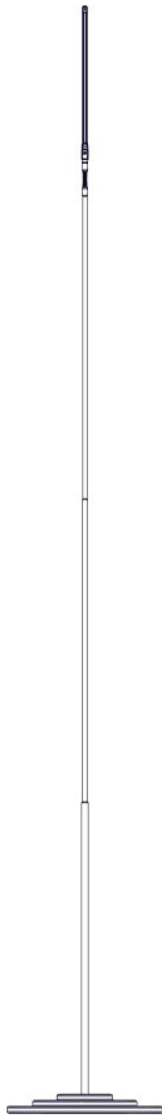
Transducer Type	8 x 4mm electret condenser
Frequency Response	80 – 15000 Hz
Polar pattern	Cardioid array
Max Input Sound Level	(@ 1kHz-1Pa THD<10%): 105dB <sub>SPL</sub>
Sensitivity	(@ 1kHz): -37dBV ±4dB
Signal to Noise Ratio	(@ 1kHz-1Pa A-weighted curved): 55dB
Polarity	Positive pressure on diaphragm produces positive voltage on pin 2 with respect to pin 3 <sup>1</sup>
Current consumption	7mA
Connector	Three-pin professional audio (XLR), male
Case	Ultra-black Ruthenium-plated brass
Phantom Supply Voltage	36 to 52 Vdc, (+) pins 2 and 3 <sup>1</sup>
Dimensions	6 x 6 x 226 mm (0,24 x 0,24 x 8,90 inch)
Weight	0,032 kg (0,07 lb)
<p>Notes for data</p> <p>1. Referred to the XLR connector of the included preamplifier</p> <p>New materials and design are introduced into existing products without previous notice. Present systems may differ in some respects from those presented in this catalogue.</p>	



Capture-KMC20  
with vertical base



Capture-KMC20  
with horizontal base



Capture-KMC20  
on mic stand