

## Bluetooth & Analogue Audio Dante® Wall Plate EU

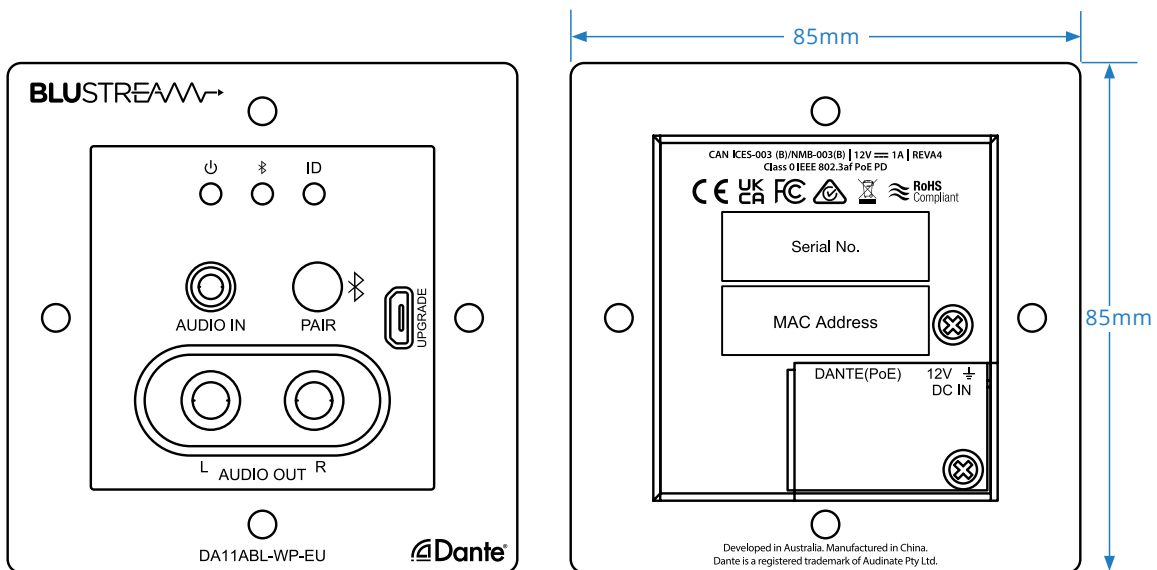
### Description

The DA11ABL-WP is a multi-input / output wall plate to convert Bluetooth and analogue audio within a digital Dante® networked audio system.

The DA11ABL-WP converts 2 x input channels of Bluetooth, or unbalanced audio to Dante® digital audio, and 2 x channels of Dante® audio to 2 x output channels of unbalanced audio.

The DA11ABL-WP is a plug & play device that is powered using PoE (Power over Ethernet), or via 12V power supply, offers support for AES67 RTP audio transport, and magnetic faceplate design allows for both UK & EU backbox compatibility.

The DA11ABL-WP is the ideal BYOD interface to allow any Bluetooth device to stream audio wirelessly to a Dante® audio system.



### Key Features

- Dante® network wall plate interface for Bluetooth and analogue L/R audio inputs, and L/R audio outputs
- Converts 2ch Bluetooth, or un-balanced audio sources to Dante® audio
- Converts 2x Dante® audio channels to un-balanced audio outputs
- Adjustable input sensitivity from +24dBu to -28dBV via control software
- Adjustable output gain from +20dBu to -28 dBV via control software
- Supports: 44.1, 48 & 96kHz sample rates @ 16, 24 or 32 Bit
- Configurable Dante® device latency (supports 1, 2 or 5ms configurable using Dante® Controller)
- Supports AES67 RTP audio transport
- Features Class 0 IEEE 802.3af PoE for powering of product from any PoE switch
- Supports power via 12V DC adapter (supplied) for when network switch does not support PoE
- Magnetic faceplate surround allowing for both UK & EU backbox compatibility

\*Dante® is a registered trademark of Audinate Pty Ltd

Blustream cannot be held responsible for errors in typography or photography. Specifications are subject to change without notice.



## Specifications

- **Module Dimensions (W x H x D):** 74mm x 74mm x 50mm (without faceplate)
- **Faceplate Dimensions (W x H x D):** 85mm x 85mm x 5mm
- **Cut Out Dimensions (W x H x D):** 52mm x 55mm x 38mm
- **Mounting hole spacing:** UK 60mm CTC, EU 60mm CTC
- **Backbox Requirements:** UK single gang backbox / EU single gang backbox
- **Shipping Weight:** 0.3kg
- **Operating Temperature:** 32°F to 104°F (0°C to 40°C)
- **Storage Temperature:** - 4°F to 140°F (- 20°C to 60°C)
- **Power Supply:** Class 1 IEEE 802.3af PoE or 12V/1A DC 2-Pin Phoenix connector

## Included Accessories

<b>Faceplate</b>	1 x Magnetic Faceplate
------------------	------------------------

## Connectivity

- **Audio Input Connectors:** 1 x Analogue Left / Right audio (3.5mm stereo jack)
- **Audio Output Connectors:** 2x Analogue RCA (Left / Right)
- **Network Connectors:** 1 x PoE Dante® Ethernet Connection (RJ45)
- **Bluetooth:** Bluetooth V5.0 - SBC / MP3 / AAC / APT-X / APTX-LL / APTX-HD, 44.1K-48KHz 16 / 24Bit
- **Configuration Switches:** 1 x Push Button (connect / selection)
- **Firmware Upgrade:** 1 x Micro-USB

## Acknowledgements

Dante® is a registered trademark of Audinate Pty Ltd.

## Regulatory Compliance



Blustream cannot be held responsible for errors in typography or photography. Specifications are subject to change without notice.