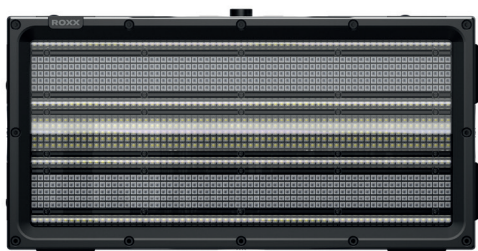


## CLUSTER S2



- High-power, pixel-mappable hybrid strobe / washlight
- Center Strobe mimics traditional look from Xenon-bulb
- Full color mixing & tuneable white with high CRI
- Four extra single Strobe lines create unique effects and give an extra boost on High-Power Strobe applications
- Large number of build-in patterns
- IP65 rated for Indoor & Outdoor use
- Integrated C-Lok system for toolfree and seamless CLUSTER setups

Following the success of the CLUSTER LED blinders, ROXX has now further expanded the CLUSTER family with the introduction of the S2.

The S2 is an advanced pixel mappable strobe and washlight that combines two complementary effects in one unit, designed for extremely powerful and versatile applications.

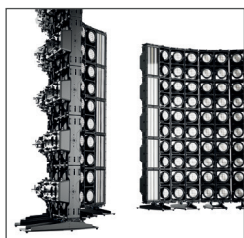
Thanks to the advanced and tool-free cluster mechanism and the equal distance of the single LED lines to each other, continuous effects can be displayed over several devices. Thus, the devices merge both in the horizontal and vertical alignment to a large whole.

CLUSTER S2 features a large number of build-in patterns, giving users a fast and simple way of creating stunning effects whenever a media server is not available, or the installation requires a speedy solution. ROXX also offers a wide range of magnetic, easy-to-apply accessory filters. The smoked clear filter is especially useful in TV applications, as it allows the devices to visually disappear in the stage design when switched off. The two elliptical filters shape the light beam either vertical or horizontal with a frost effect, giving the user even more effect possibilities.

### Accessories



Line Array  
(Flybar)



Line Array  
(Floor Bracket)



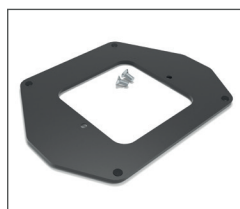
Omega Bracket



Various filters



FX Distance Frame



Floor Extension



Rigging Bracket



Yoke 4.1  
(Included)



Yoke 4.3  
(Optional)



Yoke 2.2  
(Optional)

## Technical Data

Photometrics	
LED expected lifetime	50.000 hours
Lightsource	612x CW LED's (7000K), 680x RGB LED's
Type of optical system	native, elliptical lens
LED PWM Frequency	selectable 800Hz, 1.200Hz, 2.000Hz, 3.600Hz, 12kHz, 25kHz
Beam angles @ Full (50%)	66°
Maximum Field angles @ Full (10%)	108°
Color temperature range	2000-10.000K
CRI/Ra @ Full	88
Efficacy @ Full (max)	48,07 lm/W
Luminous flux @ Full	57.750 lm (1200W)
Luminous flux @ (illumination mode)	14.807lm (305W)
Luminous flux @ Center Strobe (Boost Mode)	70.661lm (1135W)
Luminous flux @ 4x Single Strobes (Boost Mode)	35.582lm (982W)
Luminous flux @ 2x RGP Panels (Boost Mode)	22.685lm (853W)
Luminous flux @ Center Strobe (Illumination Mode)	20.260lm (300W)
Luminous flux @ 4x Single Strobes (Illumination Mode)	14.480lm (300W)
Luminous flux @ 2x RGP Panels (Illumination Mode)	7.920lm (300W)
illuminance Lux @ 3m / 9,84ft (@ Full)	4460lx / 414fcd
illuminance Lux @ 3m / 9,84ft (@ Center Strobe )	3500lx / 325fcd
illuminance Lux @ 3m / 9,84ft (@ 4x Single Strobes)	2560lx / 238fcd
illuminance Lux @ 3m / 9,84ft (@ Center Strobe + 4x Single Strobes)	4045lx / 376fcd
illuminance Lux @ 3m / 9,84ft (@ 2x RGB Panels)	1075lx / 100fcd
Thermal Characteristics	
Cooling	Active, Forced Air, Temperature-regulated
Humidity (max.)	95%
Temperature range, Operating	-40°C to 45°C
Temperature range, Start-Up	-20° to 45°C
Temperature range, Storage	-40°C to 80°C
Thermal Protection	Automatic overtemperature protection
Electrical Data	
AC Power, max	90 – 285V 50/60Hz
AC Power, nominal	100 – 240V 50/60Hz
Electrical protection	Overload protection with automatic recover
Max power consumption	1250W
Constant power consumption	320W
Power Max. Out	6,24A @ 230V / 6,14A @ 120V
Power Linking @ Max Power Consumption (Boost Mode)	1 unit @ 230V / 0 unit @ 120V
Power Linking @ Constant Power Consumption (Illumination Mode)	7 units @ 230V / 3 units @ 120V
Power Factor	0.998 PF (230V) / 0.997 PF (120V)
Power Supply Unit	Inbuilt auto-ranging electronic switch-mode

## Technical Data

Operator & Controller	
DMX channels	Simple Mode 15CH, Easy Mode 39CH, Standard Mode 71CH (default mode), Pure Mode 112CH Single Pixel 8 Bit with Strobefunction, Pure Mode 209CH Single Pixel 16 Bit with Strobefunction, Full Access Mode 178CH 8 Bit single Pixel with Pattern, Full Access Extended Mode 275CH 16 Bit with Pattern
DMX modes	7
Protocol	USITT DMX512A RDM ANSI E1.20 Art-Net sACN
Operator & Controller	
Setting and addressing	OLED graphical display / 4 controls RDM ANSI E1.20
Standalone mode	Auto Program, Color Macro, Quick Color, Tunable White, User Color
Wireless DMX	n.a.
Indicator	OLED graphical display
Controls	4 touch sensitive, backlighted controls
Strobe	0-20Hz
DMX I/O	IP65 XLR 5-pin male/female
Ethernet I/O	IP65 RJ45 Ethernet male/female
Power In	TRUE1 compatible input & link-thru sockets
USB Firmware Update	IP65 USB socket
Dimensions & Weight	
IP class	IP65
IK class	IK08
Body material	Aluminum, Nylon
Lens material	Tempered glass front
Net dimensions without Yoke (w x h x d)	400 x 200 x 191mm
Net dimensions inches	15,75 x 7,87 x 7,52 inches
Net weight (incl. Yoke)	12,6 kg (27,78lbs)
Tilt	360°
Tilt Locking System	Locking system with tothing and angle indicator
Included / Optional	
Included items	Yoke 4.1, 2m Power Cable, Puk
Optional Accessories	Yoke 2.2, Yoke 4.3, FX Distance Frame, FX Filter Smoked Clear, FX Filter Elliptical Horizontal, FX Filter Elliptical Vertical, Floor Extension, Rigging Bracket, Omega Bracket ST
Color options	Black – RAL 9004 (Standard) Custom color – any RAL (on request)
Installation	
Mounting point by Yoke (included)	3x 13mm / 1/2" holes, 1x centric TV Spigot attachment, 3x integrated Camlocks for Omega Brackets
Mounting point on fixture	1/4 turn Omega Bracket on top and rear side
Mounting point with optional Rigging Bracket	2x 13mm / 1/2" holes for Clamp fixation
Orientation	Any
Rigging possibilities	Hanging or ceiling / pendant mount
Safety features	2x rear mount for safety wire
Minimum distance from flammable materials	0,3 meters (11,8 inch)

## Order Number

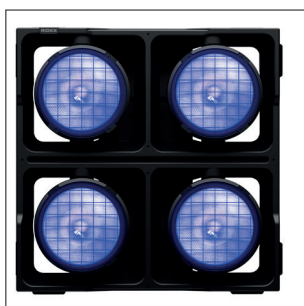
CLUSTER	
S2	13305001
Accessories	Order Number
FX Distance Frame	13908101
FX Filter Smoked Clear	13908001
FX Filter Elliptical Horizontal	13907801
FX Filter Elliptical Vertical	13907901
Yoke 2.2	13907001
Yoke 4.1	13907601
Yoke 4.3	13907101
Rigging Bracket	13907411

Accessories	Order Number
Floor Bracket	13908501
Case 4 pcs. / 8 pcs.	13907411
Case 2 pcs / 4 pcs.	13907511
Omega Bracket	90900002
Floor Extension	13907201
Rigging Bracket	13907411
Omega Bracket	90900002
CLUSTER Line Array Side Brackets	13909601
CLUSTER Line Array Flybar	13909501
CLUSTER Line Array Back Bone 2+2	13909801
CLUSTER Line Array Floor Bracket	13909901

## Further products of the CLUSTER series:



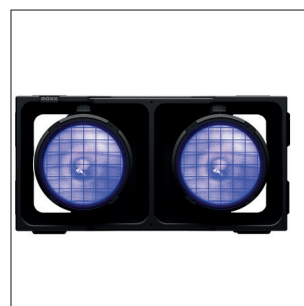
CLUSTER B4 W



CLUSTER B4 FC



CLUSTER B2 W



CLUSTER B2 FC

